

  
**StarPRNT Intelligence**  
*'unified, multi-model driver and configuration suite'*

***m*Collection**

# **Printer Software Installation Manual**

# Contents

<b>1. Software Overview .....</b>	<b>3</b>
<b>1.1 Windows Printer Driver .....</b>	<b>3</b>
<b>1.2 Printer Utility .....</b>	<b>4</b>
1.2.1 Starting the Printer Utility.....	4
1.2.2 Printer Utility Functions.....	5
<b>2. Operating Environment .....</b>	<b>8</b>
<b>2.1 Operating System .....</b>	<b>8</b>
<b>2.2 Supported Functions (Interface) .....</b>	<b>9</b>
<b>3. Installation .....</b>	<b>10</b>
<b>4. Uninstallation .....</b>	<b>13</b>
<b>5. Revision History .....</b>	<b>15</b>
<b>Appendix 1. Pairing with Bluetooth in Windows.....</b>	<b>16</b>

## **Notice**

- Windows is a registered trademark of Microsoft Corporation in the U.S, Japan and/or other countries.
- The Bluetooth® word mark and logos are registered trademarks owned by the Bluetooth SIG, Inc.
- Apple is a trademark of Apple Inc., registered in the U.S. and other countries.
- Android is a trademark of Google Inc.
- Company and product names are trademarks or registered trademarks of their respective companies.
- Reproduction of any part of this documentation is prohibited.
- The contents of this documentation are subject to change without notice.
- We can assume no responsibility for any results which may come out of the usage instructed in this documentation.

# 1. Software Overview

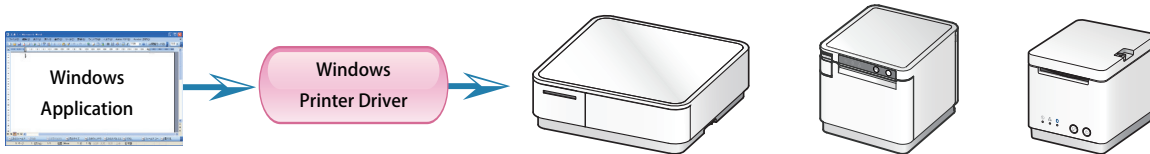
mCollection printer software package contains the Windows printer driver and a printer utility. To use the software package, follow the procedure given in chapter 3, "Installation," and then turn the printer on.

## Target Model and Firmware Versions

Target Model	Printer F/W
MCP20/21 (mC-Print2)	Ver 1.0 or later
MCP30 (mC-Print3)	Ver 2.0 or later
MCP31 (mC-Print3)	Ver 1.0 or later
POP10 (mPOP)	Ver 1.0 or later

### 1.1 Windows Printer Driver

The Windows printer driver is used when files are printed from Windows applications.

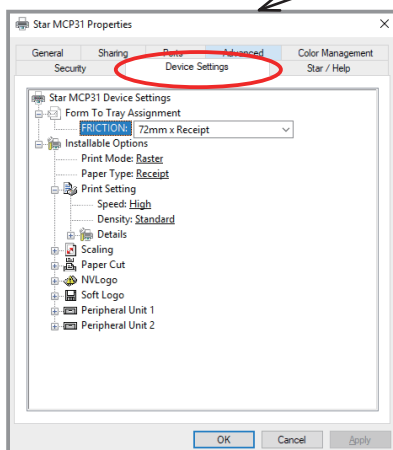
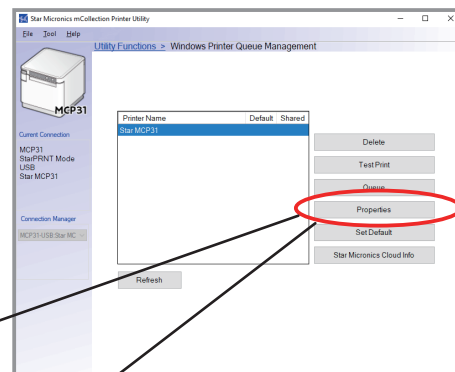


Install the mCollection Printer Software, and then connect a printer with a USB interface to the PC. The Plug and Play feature will enable the Windows printer driver automatically.

To use the Windows printer driver when you are connecting to the printer through an interface other than USB, install the driver from the Windows Printer Queue Management window of the printer utility.

When using the printer through the Windows printer driver, you can set options such as the paper type, paper cut type, and logo print method by clicking Properties in the Windows Printer Queue Management window of the printer utility.

For details about the printer driver, see the printer driver help.



Starting the Printer Driver Help

## 1.2 Printer Utility

The printer utility is used to connect to the printer and to set various options.

It can be used in conjunction with the Windows printer driver, OPOS driver, and in numerous other environments.

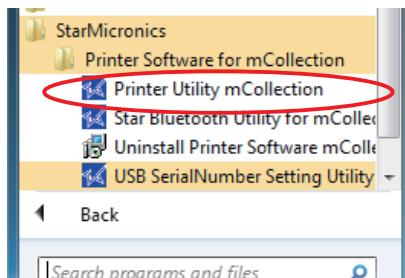
The printer utility is used over a specific "Connection" ("Connection" has specific properties the connection method).

For details on how to configure connections and on the utility functions, see the printer utility help.

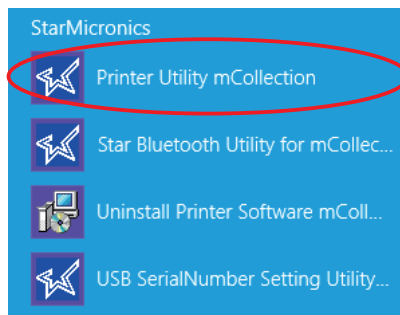
### 1.2.1 Starting the Printer Utility

- ① On the Windows taskbar, click 'Start', and then click 'All Programs' > 'Star Micronics' > 'Printer Software for mCollection' > 'Printer Utility mCollection' > 'Printer Utility mCollection'.

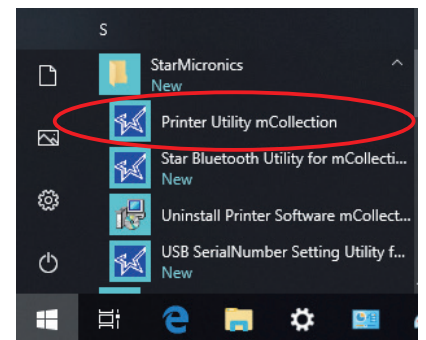
#### ❖ Windows 7



#### ❖ Windows 8.1



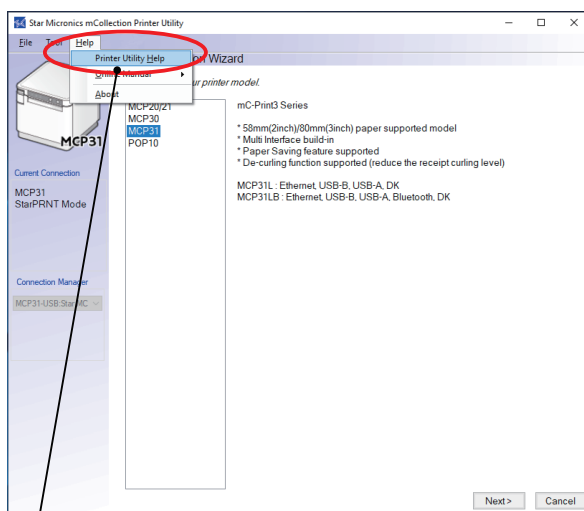
#### ❖ Windows 10



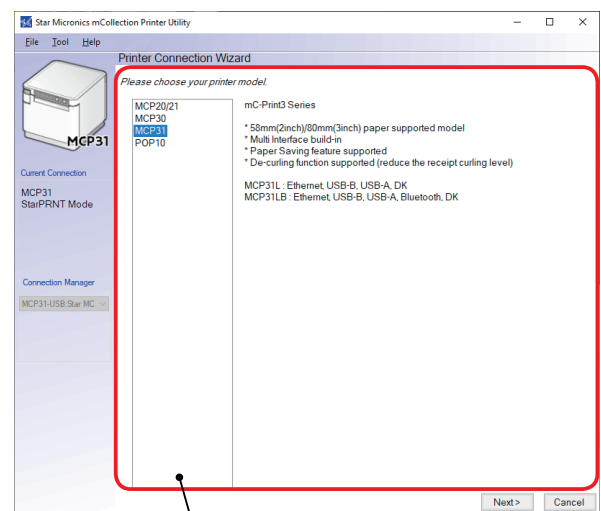
- ② The 'User Account Control' dialog appears. Click 'Yes'.

- ③ The printer utility window opens.

When you start the printer utility for the first time, the 'Printer Connection Wizard' appears. Please choose the interface to create a connection. You will be able to use the printer utility functions through the connection that you created.



**Starting the Printer Utility Help**



**Printer Connection Wizard**

## 1.2.2 Printer Utility Functions

### Utility Functions

Click a link in the list of utility functions to display the properties of the corresponding function.

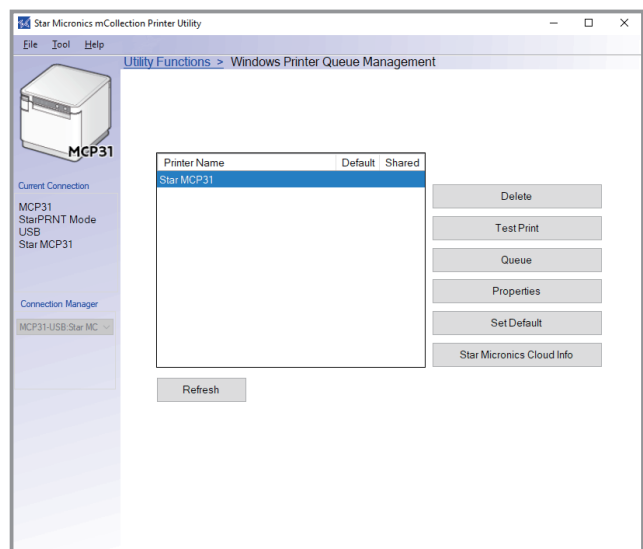
The printer utility is used over a specific connection (each connection has specific properties such as the connection method).



### Windows Printer Queue Management

Windows Printer Queue Management can be used to create and manage the printer queues of the Windows print spooler system.

To use the printer driver when you are connecting to the printer through an interface other than USB, install the Windows printer driver from this function.

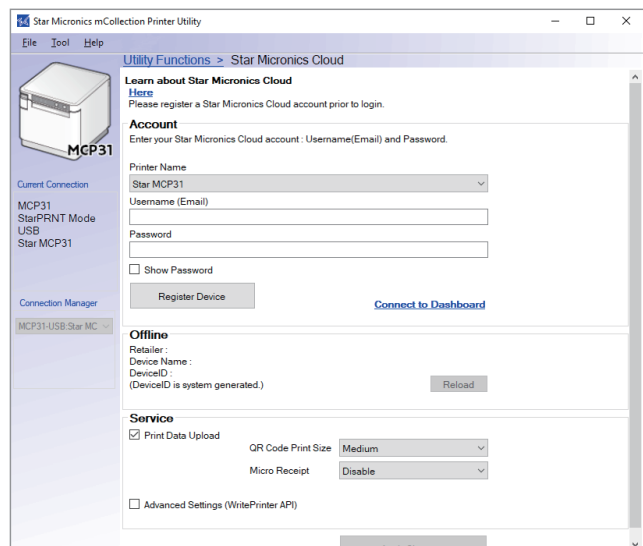


### Star Micronics Cloud

Register the device (mCollection printer queue or OPOS POSPrinter device) using your registered Star Micronics Cloud account.

Once you have registered the device, you can use the service of uploading print data to the cloud server and manage the registered device from the Star Micronics Cloud dashboard.

To use this function with mCollection printer queue, set the print mode to "Raster" from the Printer properties in the printer driver.

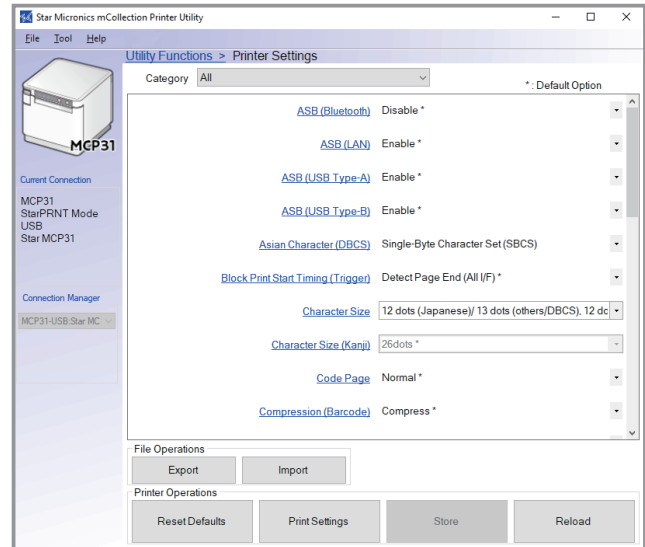


◆ **Printer Settings**

You can change the printer settings (memory switch settings) according to your needs.

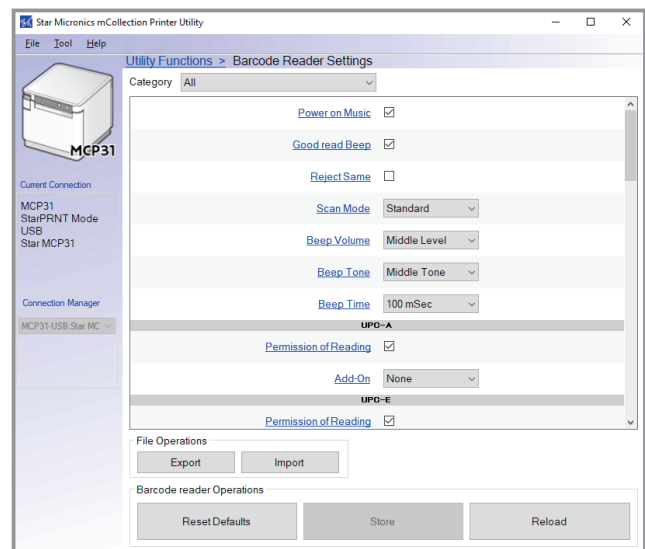
*What are memory switches ?*

You can configure the basic settings of a printer and store them in memory switches on the printer.



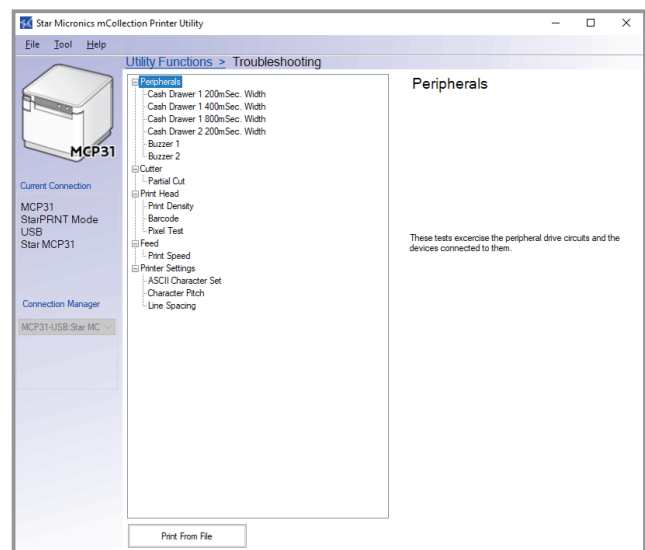
◆ **Barcode Reader Settings**

You can change the barcode reader settings according to your needs. (MCP20 and MCP30 do not support.)



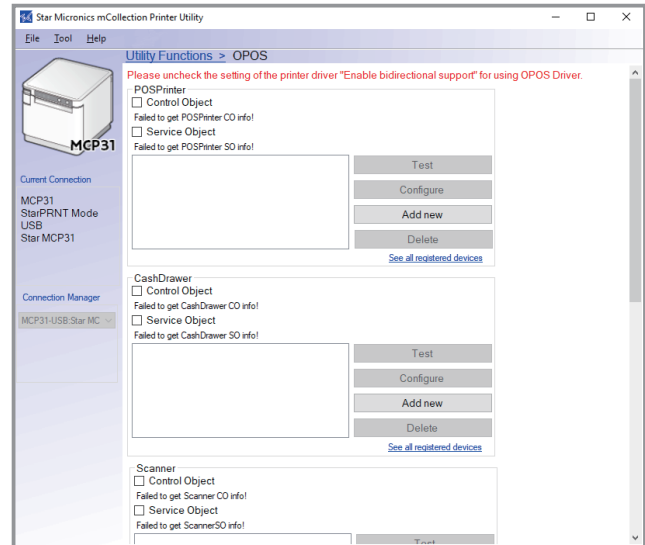
◆ **Troubleshooting**

You can check the operations of various printer functions.



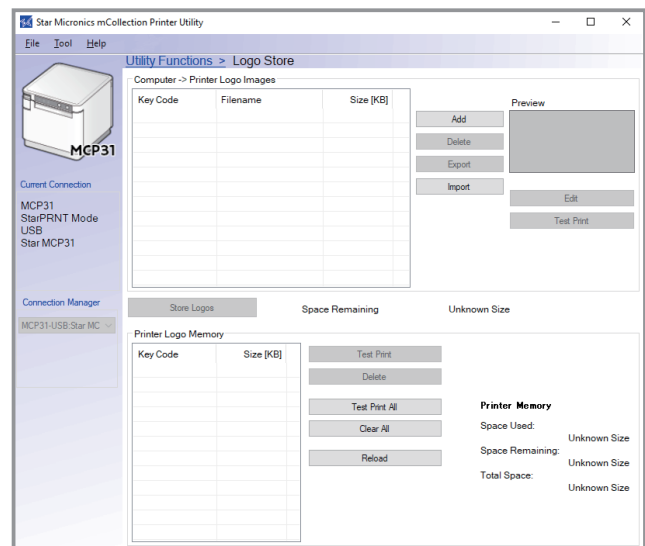
◆ OPOS

You can store, configure, and perform similar tasks for OPOS POS printer devices cash drawer devices, scanner devices (Barcode Reader), line display device (Customer Display), and ToneIndicator (mC-Sound).



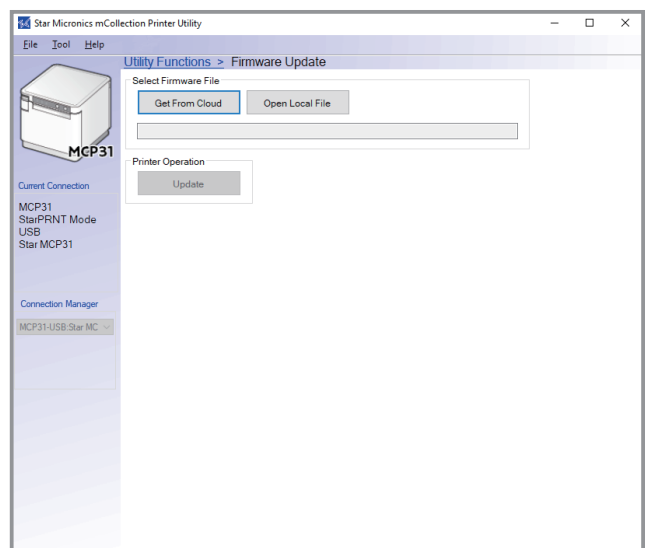
◆ Logo Store

You can store logos (image data) in the printer's memory. By storing logo and other image data that is printed frequently, you can expect increased print throughput, because there is no need to send the data every time you print.



◆ Firmware Update

You can update your printer firmware via cloud or local file.



## 2. Operating Environment

### 2.1 Operating System

This software supports the following operating systems.

- ◆ Microsoft Windows 7 32bit/64bit
- ◆ Microsoft Windows 8.1\* 32bit/64bit ( except Windows RT )
- ◆ Microsoft Windows 10\* 32-bit and 64-bit (except Windows 10 Mobile and Windows 10 IoT Core)

\*Limitation for Windows 8.1/ 10

- Star original Printer Driver Function (e.g. Logo Setting) can not be changed from “Windows UI (Modern UI)”. However, once the setting of its function is changed from “Desktop UI”, these function can be used on “Windows UI (Modern UI)” as well.
- USB Printer will not be appeared in [Device and Printer] if its power is off.
- Error status (e.g. Paper empty during printing) will not be shown in “Windows UI (Modern UI)”.



## 2.2 Supported Functions (Interface)

The following tables indicate the utility functions that you can use for each combination of the different interfaces models. One table is given for each model.

This software uses TCP communication port 9100, TCP communication port 9101, UDP communication port 22222.

### ◆ mC-Print2, mC-Print3 Series

mC-Print2	USB I/F Printer Class	Bluetooth I/F	Ethernet I/F
Printer Utility	○	○	○
Windows Printer Queue Management	○	○	○
Star Micronics Cloud	○	○	○
Printer Settings	○	○	○
Barcode Reader Settings	○*1	○*1	○*1
Troubleshooting	○	○	○
OPOS	○	○	○
Logo Store	○	○	○
Firmware Update	○	○	○

\*1: MCP21LB only

mC-Print3	USB I/F Printer Class	Bluetooth I/F	Ethernet I/F
Printer Utility	○	○	○
Windows Printer Queue Management	○	○	○
Star Micronics Cloud	○	○	○
Printer Settings	○	○	○
Barcode Reader Settings	○*2	○*2	○*2
Troubleshooting	○	○	○
OPOS	○	○	○
Logo Store	○	○	○
Firmware Update	○	○	○

\*2: Except MCP30

### 《Table of supported interfaces》

The below table shows interfaces each model supports.

Model	USB I/F	Bluetooth I/F	Ethernet I/F
MCP20	○	-	○
MCP21LB	○	○	○

Model	USB I/F	Bluetooth I/F	Ethernet I/F
MCP30	○	-	○
MCP31L	○	-	○
MCP31LB	○	○	○
MCP31C	○*3	-	○
MCP31CB	○*3	○*3	○

\*3: Except iOS

### ◆ mPOP

mPOP	USB I/F Printer Class	Bluetooth I/F
Printer Utility	○	○
Windows Printer Queue Management	○	○
Star Micronics Cloud	○	○
Printer Settings	○	○
Barcode Reader Settings	○	○
Troubleshooting	○	○
OPOS	○	○
Logo Store	○	○
Firmware Update	○	○

### 3. Installation

**Important:**

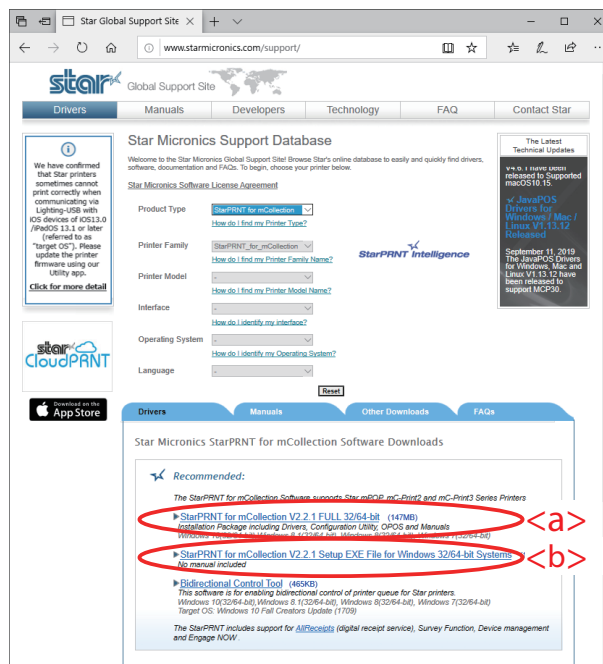
- Administrator privilege is required to run the installation.

**Note:** If you are connecting to the printer by USB, carry out the instructions in chapter 3, "Installation," and then turn the printer on.

Follow the instructions below to install the software.

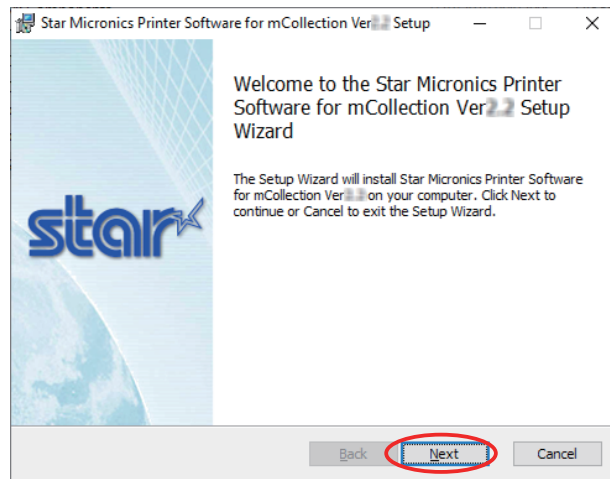
- Download Software package file ( <a> or <b> ) from Star’s website and save it.

Menu Name	File Name
<a> StarPRNT for mCollection Vx.x.x FULL 32/64-bit	StarPRNT_mCollection_vx.x.x_setup_full_yyyymmdd.zip
<b> StarPRNT for mCollection Vx.x.x Setup EXE File for Windows 32/64-bit Systems	StarPRNT_mCollection_x.x.x_setup.EXE

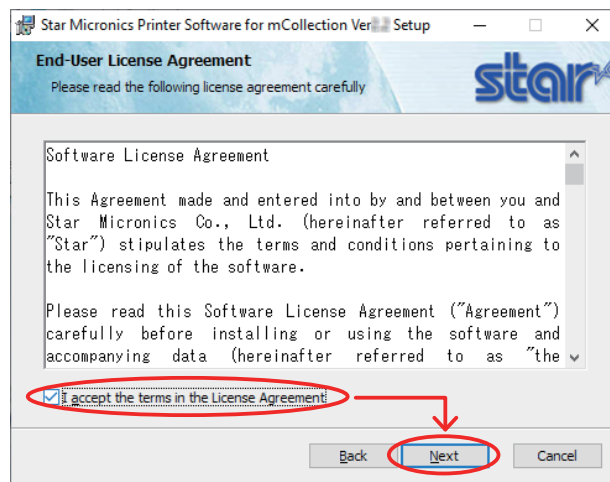


- When the saved file is <a>
  - Unzip the zip file, and execute “setup.exe” in the setup folder.
  - When the saved file is <b>
    - Execute “StarPRNT\_mCollection\_x.x.x\_setup.EXE”.
- Follow the instructions from ④ to complete the installation.
- The ‘User Account Control’ dialog appears. Click ‘Yes’.

⑤ Click 'Next'.

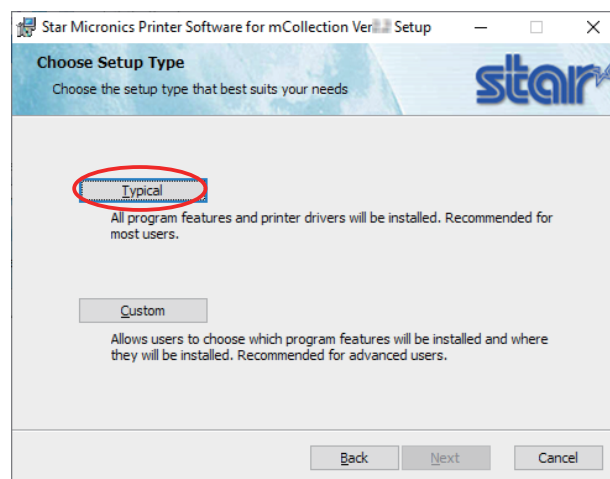


⑥ The End-User License Agreement, an agreement for installing the software, appears. Read the agreement. If you agree with the terms, select the 'I accept the terms in the License Agreement' check box, and then click 'Next'.

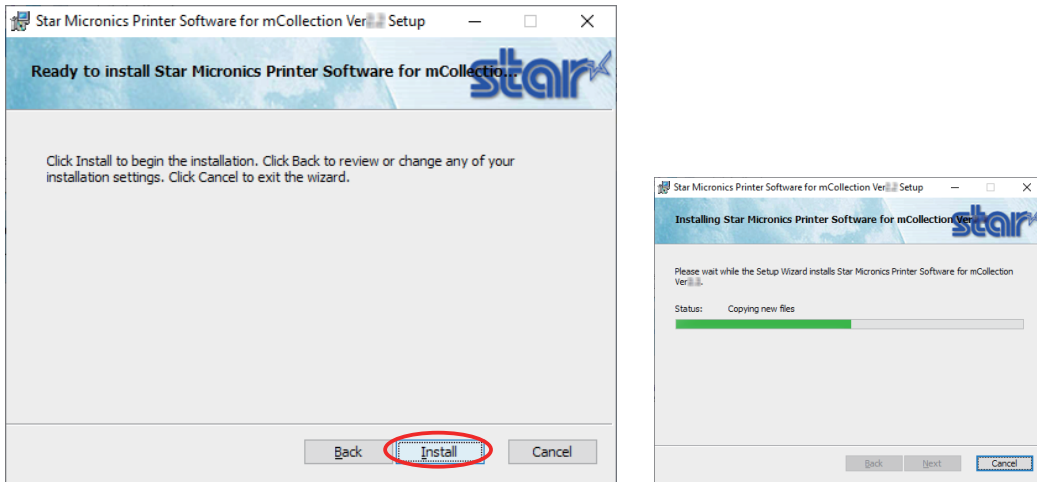


⑦ Choose the setup type.

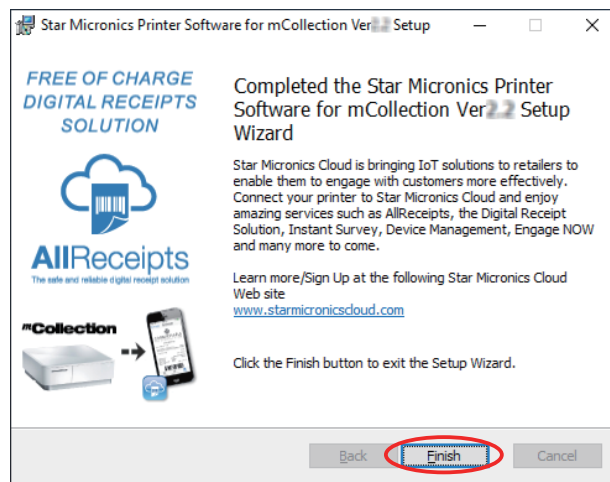
Click 'Typical' to install the all program features. Always select this option unless you have a specific reason. Click 'Custom' to install only the program features that you will need.



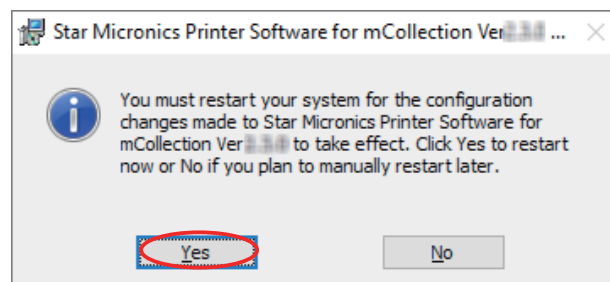
⑧ Click 'Install' to start the installation.



⑨ When the software installation completes, the following window appears. Click 'Finish' to close the wizard.



⑩ If the following confirmation window appears, click 'Yes'.



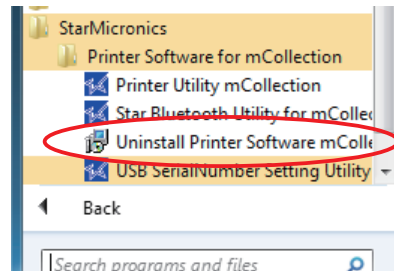
## 4. Uninstallation

Follow the procedure below to uninstall the software.

① Turn the printer power switch off.

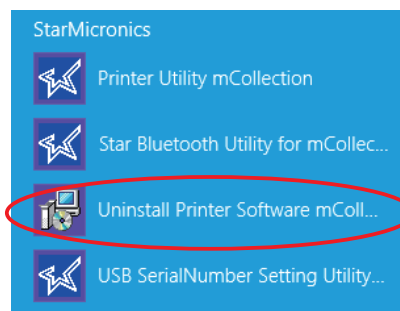
② ❖ In Windows7

On the Windows taskbar, click 'Start', and then click 'All Programs' > 'Star Micronics' > 'Printer Software for mCollection' > 'Uninstall Printer Software mCollection'.



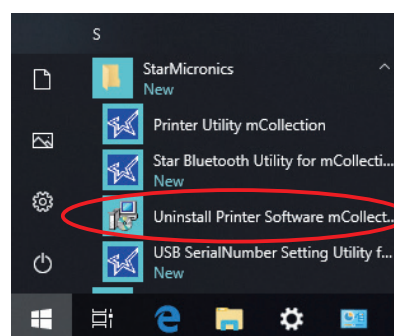
❖ In Windows8.1

On the Apps, select [Star Micronics]-[Uninstall Printer Software mCollection].



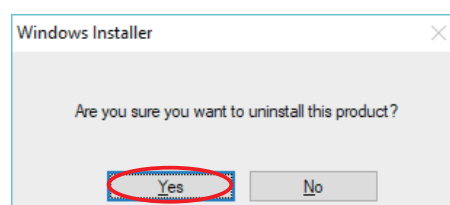
❖ In Windows10

On the Windows taskbar, click 'Start', and then click 'All Apps' > 'Star Micronics' > 'Uninstall Printer Software mCollection'.

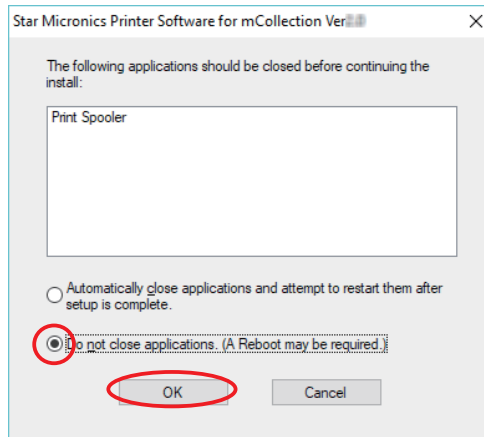


③ The 'User Account Control' dialog appears. Click or 'Yes'!

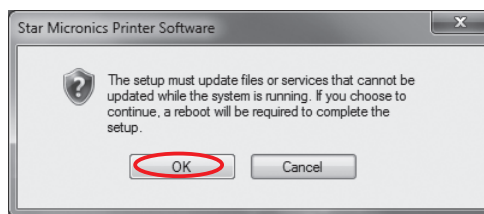
④ The following window appears. To continue, click 'Yes'!



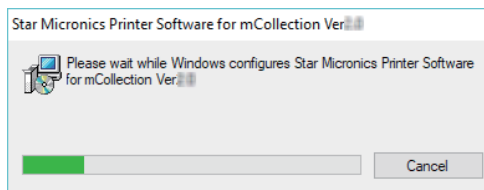
- ⑤ If the following confirmation dialog box appears, select the 'Do not close applications' option, and then click 'OK'.



- ⑥ If the following confirmation window appears, click 'OK'.

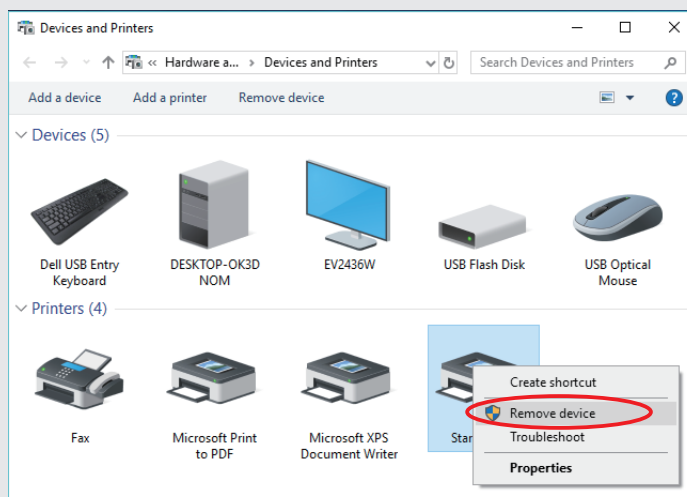


- ⑦ The uninstallation program starts and removes all the relevant software components.



❖ Note

After uninstalling the printer utility, the printer queue icon may remain in “Control Panel”-“Devices and Printers”. To delete it, right-click the printer queue icon and choose “Remove device” from the pull-down menu to delete it.



## 5. Revision History

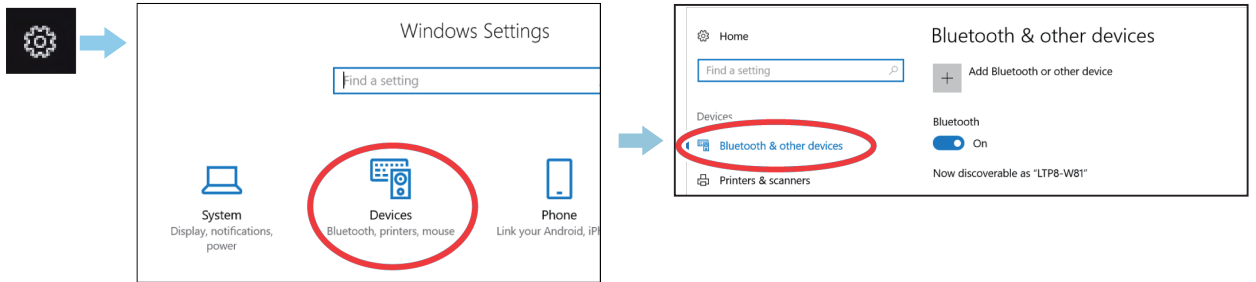
Rev. No.	Date of Revision	Changes
Rev. 1.0	June. 2018	First edition.
Rev. 2.0	Nov. 2018	Add support mC-Sound (MCS10) - MCP31 Windows Printer Driver - OPOS ToneIndicator Added a note of communication port.
Rev. 3.0	Aug. 2019	Add support MCP30
Rev. 4.0	May. 2020	Add support MCP31C, CB Support end Windows 8.

# Appendix 1. Pairing with Bluetooth in Windows

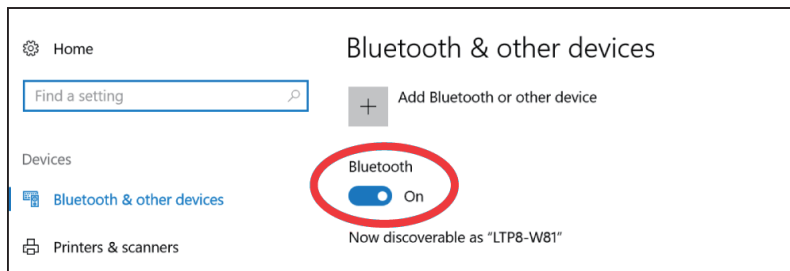
Follow the appropriate procedure.

## ❖ In Windows 10

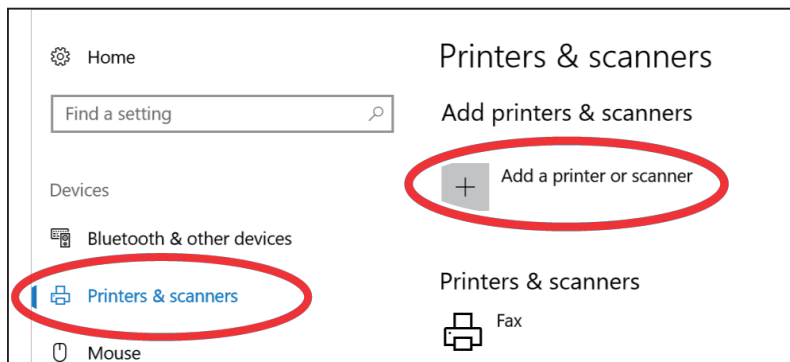
1. Open [Settings], select [Devices] - [Bluetooth & other devices].



2. Turn Bluetooth On.



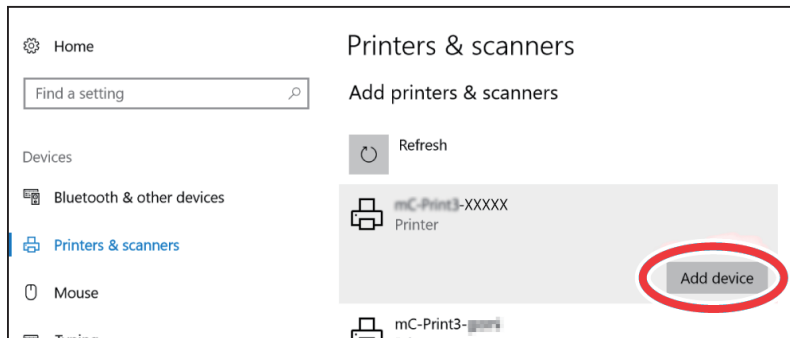
3. Select [Printers & scanners] - [Add a printer or scanner].



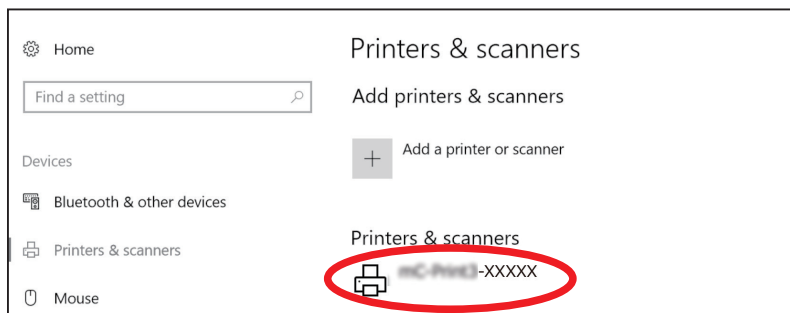


- Select the Bluetooth device name, and click or tap [Add a device].  
If the Bluetooth device name was changed, then select the device name that it was changed to.

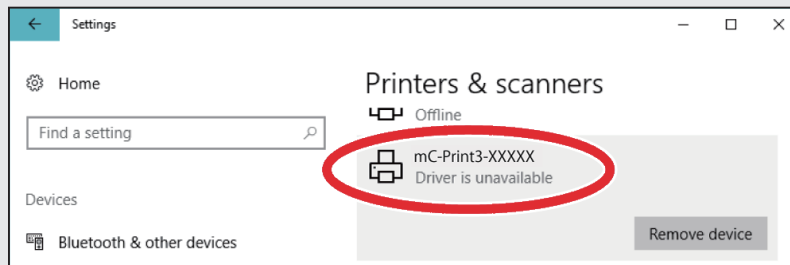
**Checking the printer's Bluetooth address**  
The Bluetooth address is listed on the test print sheet.  
Please refer to the separate manual "On-line Manual" for the test printing method.



- When the device appears in "Printers & Scanners", pairing is completed.



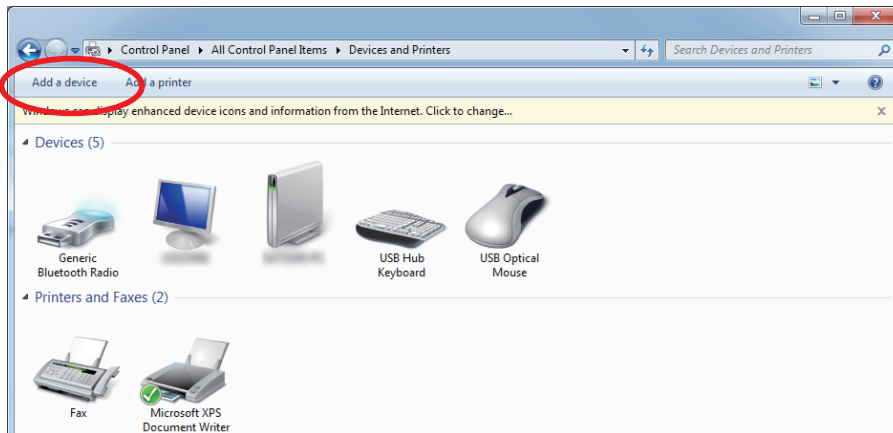
After a while, "Driver is unavailable" will be displayed, however, pairing is completed.



The device name created here cannot be used for the destination specified when printing from a Windows application. Create a separate printer queue refer to "[Windows Printer Queue Management](#)".

❖ In Windows 7 / 8.1

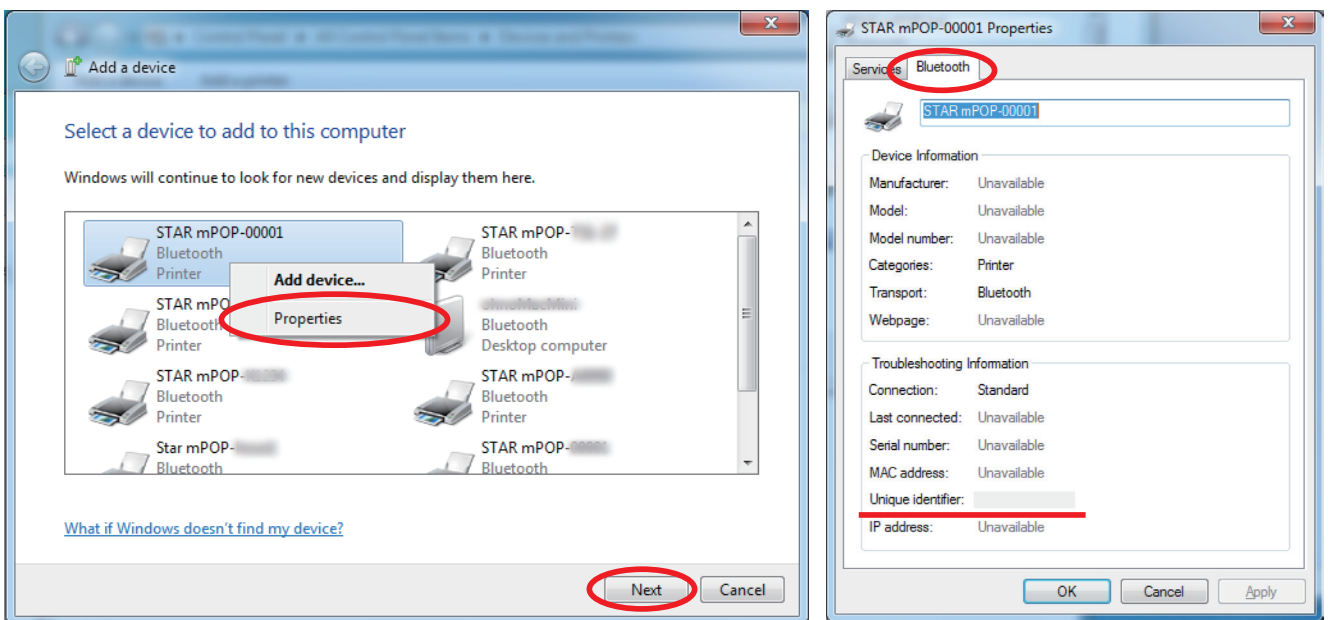
1. On the Control Panel, click "Devices and Printers". And click "Add a Device".



2. When the Pair with a wireless device window is displayed, set up the printer as instructed on the screen\*, and then click [Next].

\* See the "On-line Manual" for more information on operating the printer.

3. Select the Bluetooth device you want to add from the list of devices displayed, and then click [Next]. If multiple Bluetooth devices are found, you can right-click the printer, select [Properties], and then check the Bluetooth address to specify the printer you want to pair.

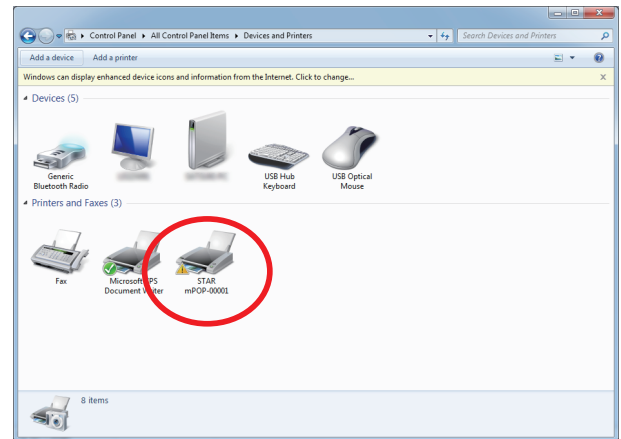
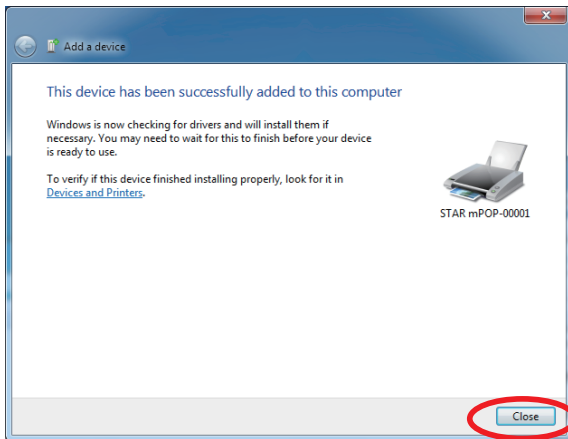


**Checking the printer's Bluetooth address**

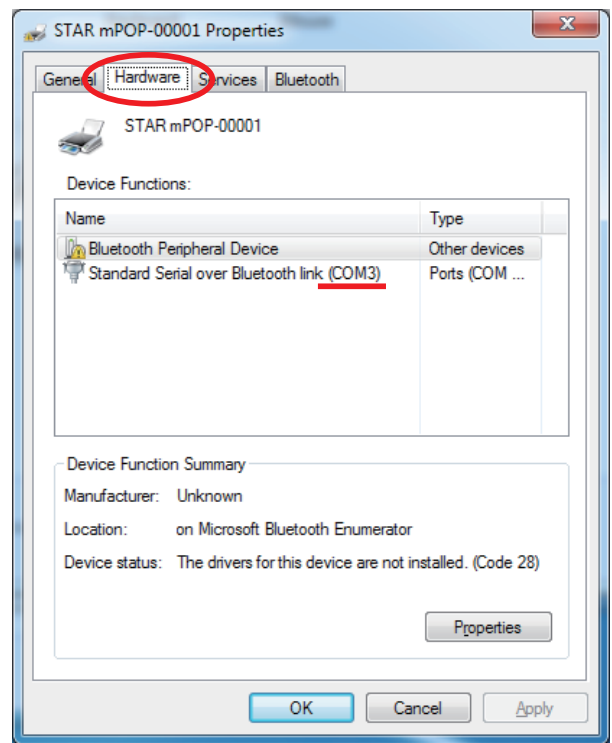
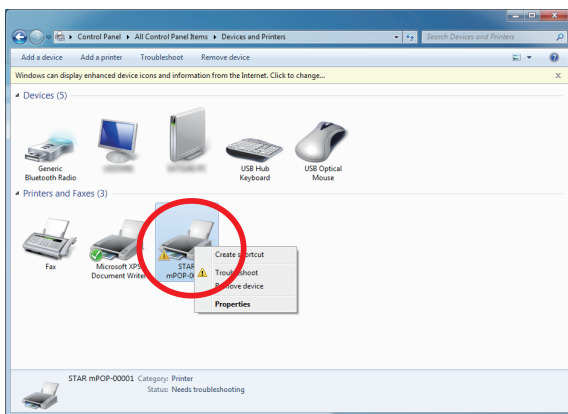
The Bluetooth address is listed on the test print sheet.

Please refer to the separate manual "On-line Manual" for the test printing method.

4. When pairing is complete, the printer is added to the Printers and Devices screen.



5. To check the virtual COM port assigned by pairing the Bluetooth device, go to the Devices and Printers screen, and then check the "Hardware" tab in Properties for the device that was added.





URL: <http://www.starmicronics.com/support/>